

SEED APPLIED BIOSTIMULANTS

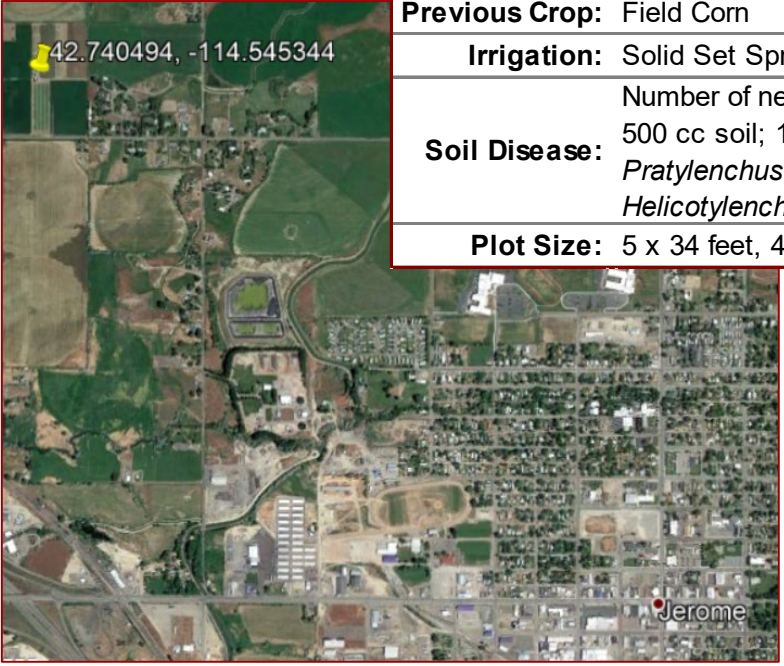
SEED APPLIED BIOSTIMULANTS SPRING WHEAT • 2019 SUMMARY

Base Seed Treatment	Biostimulent Seed Treatment (All Rates Given in Fl Oz / Cwt)	Overall % Mean	Shelley, ID		Jerome, ID	
			Yield (bu/ac)	Bu over Check	Yield (bu/ac)	Bu over Check
Base Check #1	4.0 oz SeedStart Root2 + 0.1 oz Exceed SAR	103.6%	80 a	↑ 5.6	116 a	↑ 2.8
Base Check #1	4.0 oz SeedStart Root2 + 0.5 oz BioST VPH + 0.1 oz Exceed SAR	101.7%	79 ab	↑ 4.4	113 ab	↑ 0.2
Base Check #1	4.0 oz SeedStart Root2	100.8%	78 abc	↑ 3.8	112 b	↑ -0.9
Base Check #1	4.0 oz SeedStart Root2 + 0.5 oz BioST VPH	100.7%	77 bcd	↑ 2.2	115 ab	↑ 1.3
Base Check #2	2.0 oz S3202aa	100.6%			114 ab	↑ 2.2
Base Check #1	0.50 oz Heads Up	100.0%	76 bcd	↑ 1.0	115 ab	↑ 1.3
Base Check #1	1.0 oz Step-Up	99.7%	76 bcd	↑ 1.3	114 ab	↑ 0.3
Base Check #1		98.7%	75 cd		113 ab	
Base Check #2		98.7%			111 bc	
Base Check #1	2.0 oz BioPro SeedStart Root2	98.6%			111 bc	↑ -1.9
Base Check #1	7.0 oz SeedMaxx	98.4%	78 abc	↑ 3.1	108 c	↓ -5.2
Base Check #1	3.0 oz Aglex NS111	98.3%	74 d	↑ -0.8	114 ab	↑ 0.3
Base Check #1 = (3.0 Dividend Extreme + 0.051 oz Rancona 3.8FS + 0.08 Vibrance + 1.28 oz Cruiser)		76.9	112.8			
Base Check #2 = (0.051 oz Rancona 3.8 FS + 0.4 oz Belmont 2.7FS + 0.09 Vitavax + 1.6 oz Attendant 480)		4.6%	3.3%			
		3.6	3.8			



SEED APPLIED BIOSTIMULANTS, SPRING WHEAT ● JEROME, ID

Jerome STUDY DETAILS	
Location:	Jerome, ID
Experiments:	18-19 SW-VR-JR-BIOST
GPS:	42.740494, -114.545344
Elevation:	3,672
Current Crop:	Spring Wheat, UI Stone
Previous Crop:	Field Corn
Irrigation:	Solid Set Sprinkler
Soil Disease:	Number of nematodes per 500 cc soil; 1980 <i>Pratylenchus</i> and 20 <i>Helicotylenchus</i>
Plot Size:	5 x 34 feet, 4 reps



Site Analytic	
Soil (1')	
4/24/2019	
pH	7.9
OM	2.28
TB	144
S.S.	0.11
NO3	17
NH4	3
P(Olsen)	116
K(ace)	429
S	9
Ca	2164
Mg	229
B	1
Zn	2.2
Cu	5.7
Mn	3
Fe	6
Sandy Loam	

Base Seed Treatment	Biostimulant Seed Treatment (All Rates Given in Fl Oz / Cw t)	Yield (bu/ac)	Bu over Check	Stand Count (12' row)	Test Wgt (#/Bu)
Base Check #1	4.0 oz SeedStart Root2 + 0.1 oz Exceed SAR	116	a → 2.8	167	56.2
Base Check #1	0.50 oz Heads Up	115	ab → 1.3	167	57.0
Base Check #1	4.0 oz SeedStart Root2 + 0.5 oz BioST VPH	115	ab → 1.3	162	57.6
Base Check #1	3.0 oz Aglex NS111	114	ab → 0.3	166	57.3
Base Check #1	1.0 oz Step-Up	114	ab → 0.3	177	57.3
Base Check #2	2.0 oz S3202aa	114	ab → 2.2	152	56.5
Base Check #1	4.0 oz SeedStart Root2 + 0.5 oz BioST VPH + 0.1 oz Exceed SAR	113	ab → 0.2	166	56.2
Base Check #1		113	ab	158	56.7
Base Check #1	4.0 oz SeedStart Root2	112	b → -0.9	168	56.9
Base Check #2		111	bc	164	56.2
Base Check #1	2.0 oz BioPro SeedStart Root2	111	bc → -1.9	157	57.3
Base Check #1	7.0 oz SeedMaxx	108	c ↓ -5.2	151	57.6

Base Check #1 = (3.0 Dividend Extreme + 0.051 oz Rancona 3.8FS + 0.08 Vibrance + 1.28 oz Cruiser)
 112.8 3.3% 162.7 5.7% 57.0 2.3%

Base Check #2 = (0.051 oz Rancona 3.8 FS + 0.4 oz Belmont 2.7FS + 0.09 Vitavax + 1.6 oz
 3.8 9.2 1.3

SEED APPLIED BIOSTIMULANTS, SPRING WHEAT • SHELLY, ID

STUDY DETAILS

Location: Shelley, ID
Experiments: 18-19 SW-NS-IF-PD
GPS: 43.424883, -112.137106
Elevation: 4,650
Current Crop: Spring Wheat, UI Stone SWS
Previous Crop: Potatoes
Plot Size: 5' x 20', 4 reps
Planting: 4/1/2019
Soil Diseases: Number of nematodes per 500 cc of soil; 40 <i>M. Chitwoodi</i> and 20 <i>Pratylenchus</i>



Base Seed Treatment	Biostimulant Seed Treatment (All Rates Given in Fl Oz / Cw t)	Yield (bu/ac)	Bu over Check	Test Wgt (#/Bu)
Base Check #1	4.0 oz SeedStart Root2 + 0.1 oz Exceed SAR	80	a ↑ 5.6	59.0
Base Check #1	4.0 oz SeedStart Root2 + 0.5 oz BioST VPH + 0.1 oz Exceed SAR	79	ab ↑ 4.4	59.5
Base Check #1	4.0 oz SeedStart Root2	78	abc ↑ 3.8	60.2
Base Check #1	7.0 oz SeedMaxx	78	abc → 3.1	60.1
Base Check #1	4.0 oz SeedStart Root2 + 0.5 oz BioST VPH	77	bcd → 2.2	59.5
Base Check #1	1.0 oz Step-Up	76	bcd → 1.3	60.0
Base Check #1	0.50 oz Heads Up	76	bcd → 1.0	59.0
Base Check #1		75	cd	59.3
Base Check #1	3.0 oz Aglex NS111	74	d → -0.8	59.3
Base Check #1 = (3.0 Dividend Extreme + 0.051 oz Rancona 3.8FS + 0.08 Vibrance + 1.28 oz Cruiser)		76.9		59.5
		4.6%		1.8%
		3.6		1.1